

# Devereux

*Inspiring hope. Empowering lives.*

## Human Trafficking

**Presented by**

Lisa Pompa, LMHC

Erin Knowles Wirsing, MSW



---

# Labor Trafficking

The Trafficking Victims Protection Act (TVPA) of 2000 defines “labor trafficking” as using force, fraud or coercion to recruit, harbor, transport, obtain or employ a person for labor or services in involuntary servitude, peonage, debt bondage or slavery.

---

---

# Labor Trafficking Includes

- ❑ Domestic situations (nannies or maids)
  - ❑ Cleaning services
  - ❑ Sweatshop factories
  - ❑ Janitorial jobs
  - ❑ Construction
  - ❑ Agricultural/farm work
  - ❑ Restaurants and bars
  - ❑ Hotels
  - ❑ Panhandling
  - ❑ Traveling Sales Crews
  - ❑ Car Washes
  - ❑ Hair Braiding
  - ❑ Nail Salons
  - ❑ Family Owned Businesses
  - ❑ Carnivals/Fairs
  - ❑ Gangs
-

---

# Sex Trafficking

The Trafficking Victims Protection Act (TVPA) of 2000 defines “sex trafficking” as the recruitment, harboring, transportation, provision, or obtaining of a person for a commercial sex act or in which the person induced to perform such as act is under 18 years of age. When a minor is trafficked for a commercial sex act, there is no need to prove force, fraud, or coercion.

---

---

# CSEC is....

The commercial sexual exploitation of children (CSEC) is:

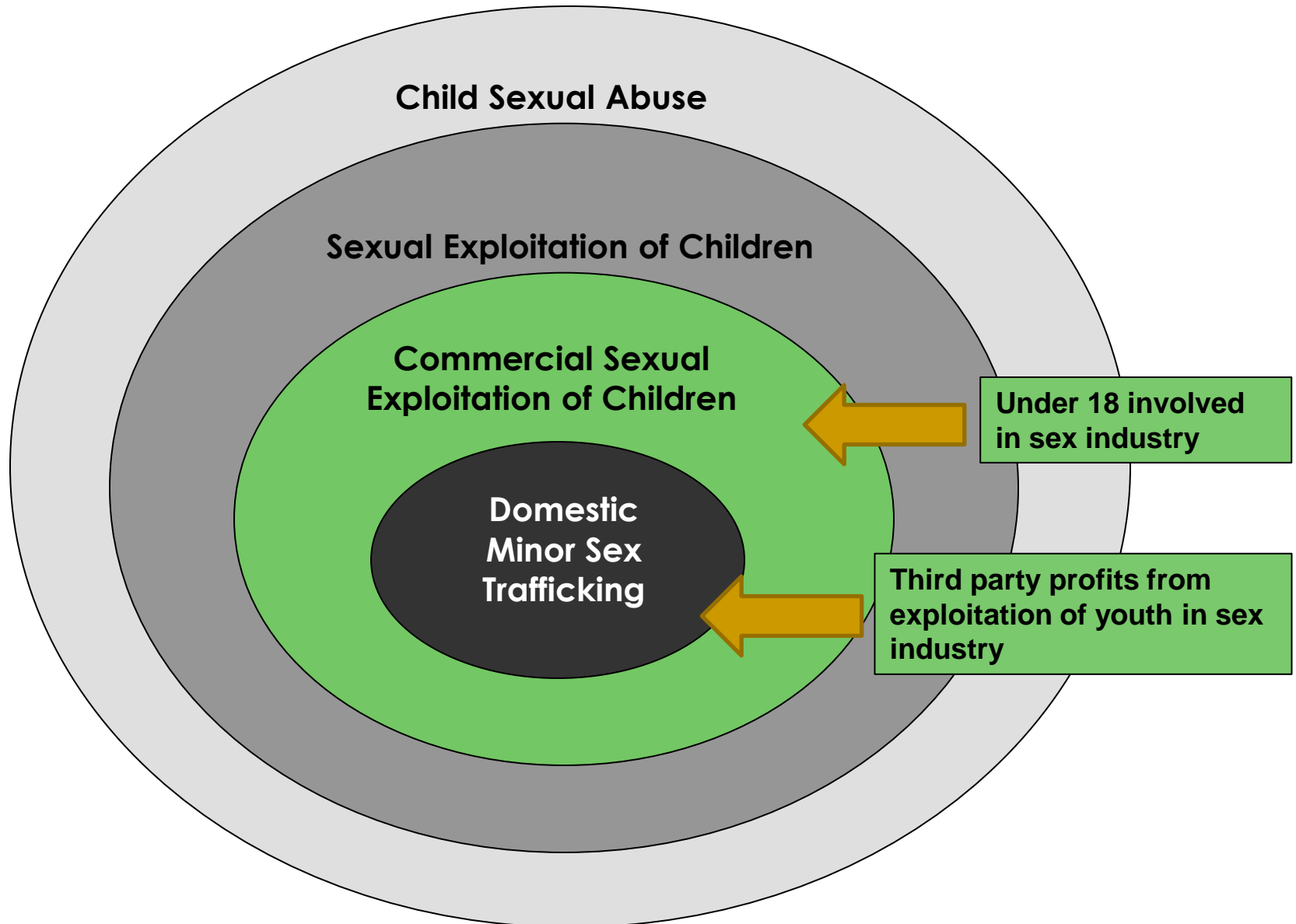
- ❑ Sexual activity involving a child in exchange for something of value, or promise thereof, to the child or another person or persons.
  - ❑ The child is treated as a commercial and sexual object.
  - ❑ CSEC is a form violence against children.
-

---

# Sex Trafficking Includes

- ❑ Erotic/nude massage
  - ❑ Escort services
  - ❑ Phone sex lines
  - ❑ Private parties
  - ❑ Gang-based prostitution
  - ❑ Pimping
  - ❑ Internet-based exploitation
  - ❑ Sex slavery
  - ❑ Street prostitution
  - ❑ Pornography production
  - ❑ Stripping
-

# Intersections of Abuse



---

# CSEC in the United States

- At least **100,000** to **300,000** youth are at risk for commercial sexual exploitation annually in the U.S. (Estes and Wiener, 2001).
- “At least **100,000** children are used in prostitution per year in the US” (The National Report on DSMT: America’s Prostituted Children, 2010, Shared Hope).
- The most common age of entry into the commercial sex industry in the U.S. is **12 – 14 years old**. (US Department of Justice, Child Exploitation and Obscenity Section).



---

# CSEC in the United States

The National Incidence Studies of Missing, Abducted, Runaway, and Thrownaway (NISMAART) children estimate that **1.6 million children run away** from home each year in the U.S.

Advocates estimate that **one in three** teens will be **approached by an exploiter within two to three days** of becoming homeless.

---

# Florida Safe Harbor Act

The “Florida Safe Harbor Act,” amends current legislation to allow a law enforcement officer who takes a child for whom there is “probable cause” to believe that he or she has been sexually exploited into custody to deliver the child to the department of Children and Family Services, in lieu of arrest. F.S. 39.401

---

# FL Safe Harbor - Definitions

The bill also amends the definitions of the terms “child who is found to be dependent” and “sexual abuse of a child” to reference sexual exploitation, expanding the definition to include “engaging in prostitution”.  
39.01(67)(g).

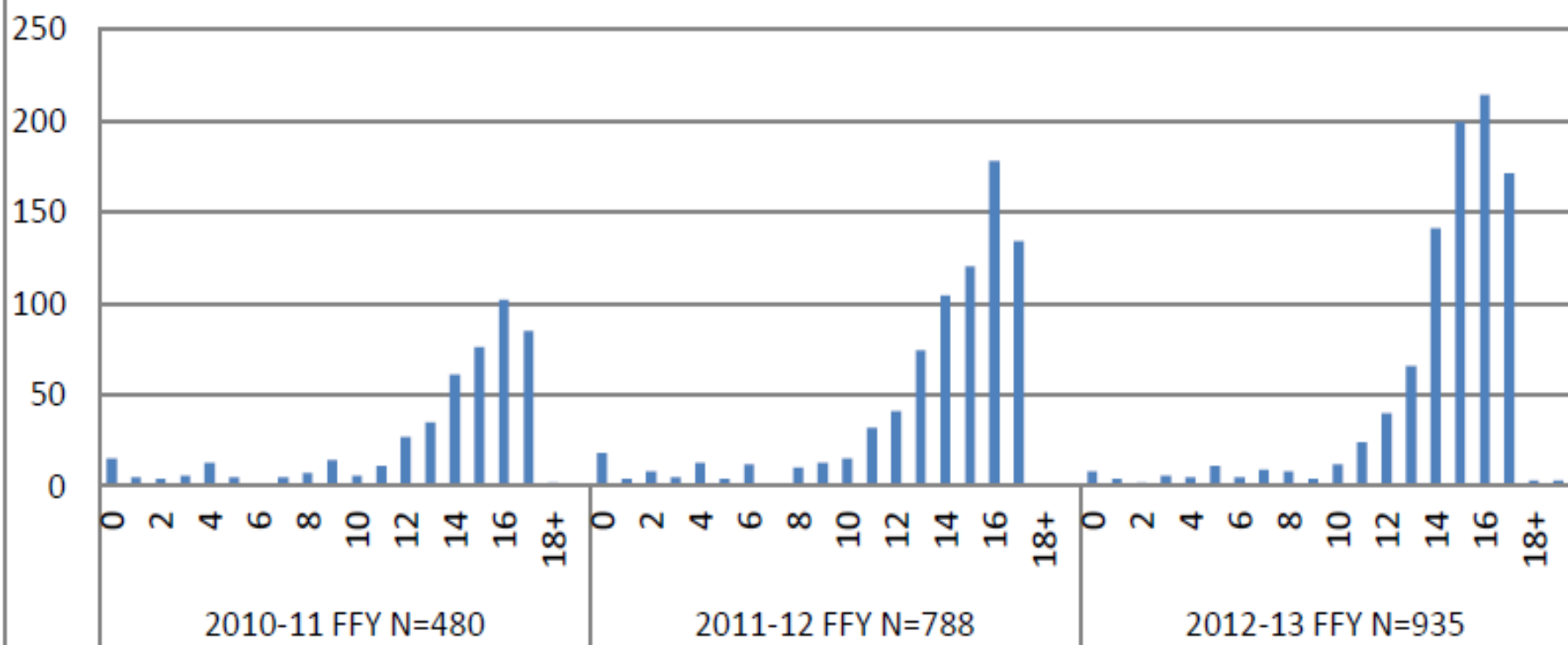
---

# FL Safe Harbor - Short Term Safe House and Child Advocates

The bill also seeks to provide a process for the assessment and placement of sexually exploited children in a safe house when available. F.S. 39.524 & 409.1678

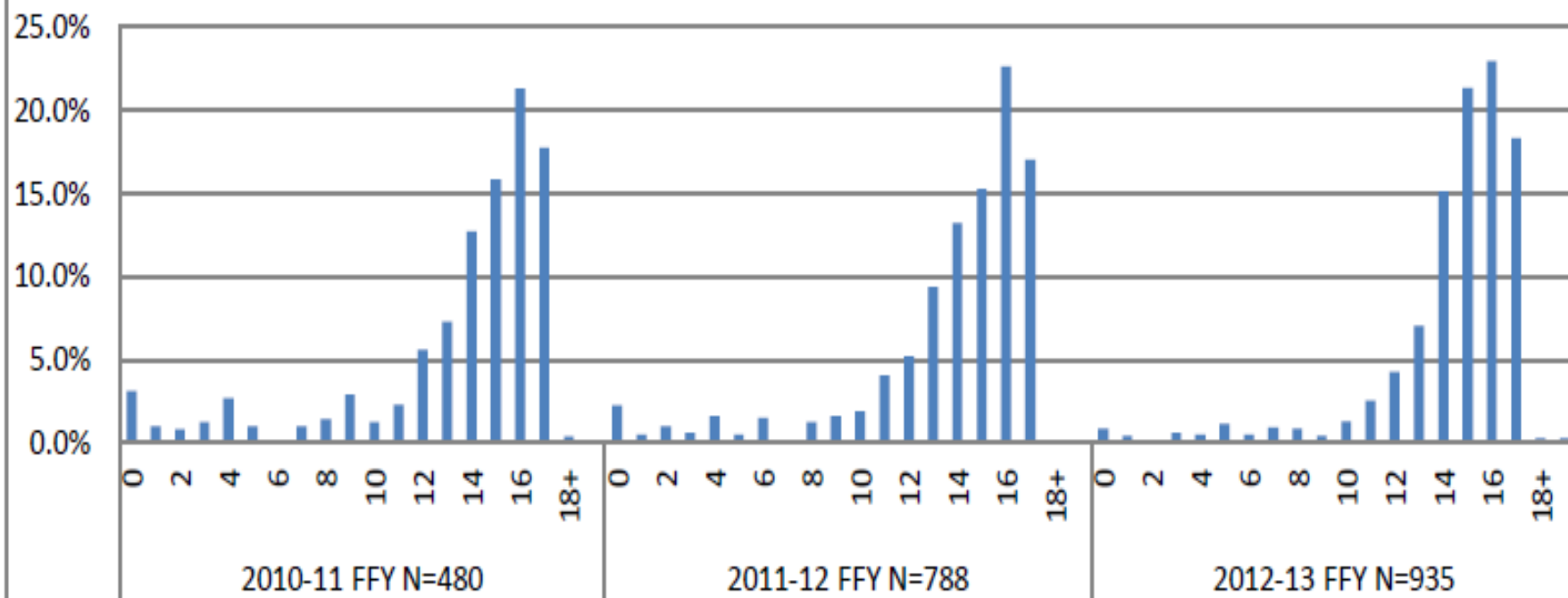
Employees of short-term houses must be trained to work with and advocate for the needs of sexually exploited children and assist them throughout any legal proceedings. F.S. 409.1678

# Florida Abuse Hotline Reports Received (Initial and Additional) by Alleged Human Trafficking Victim Age and Federal Fiscal Year



Data Source: Florida Department of Children and Families, Office of Child Welfare, Florida Safe Families Network (FSFN) Human Trafficking Calendar Year-to-Date Report 10/18/2013

# Florida Abuse Hotline Percentage of Reports Received (Initial and Additional) by Alleged Human Trafficking Victim Age and Federal Fiscal Year



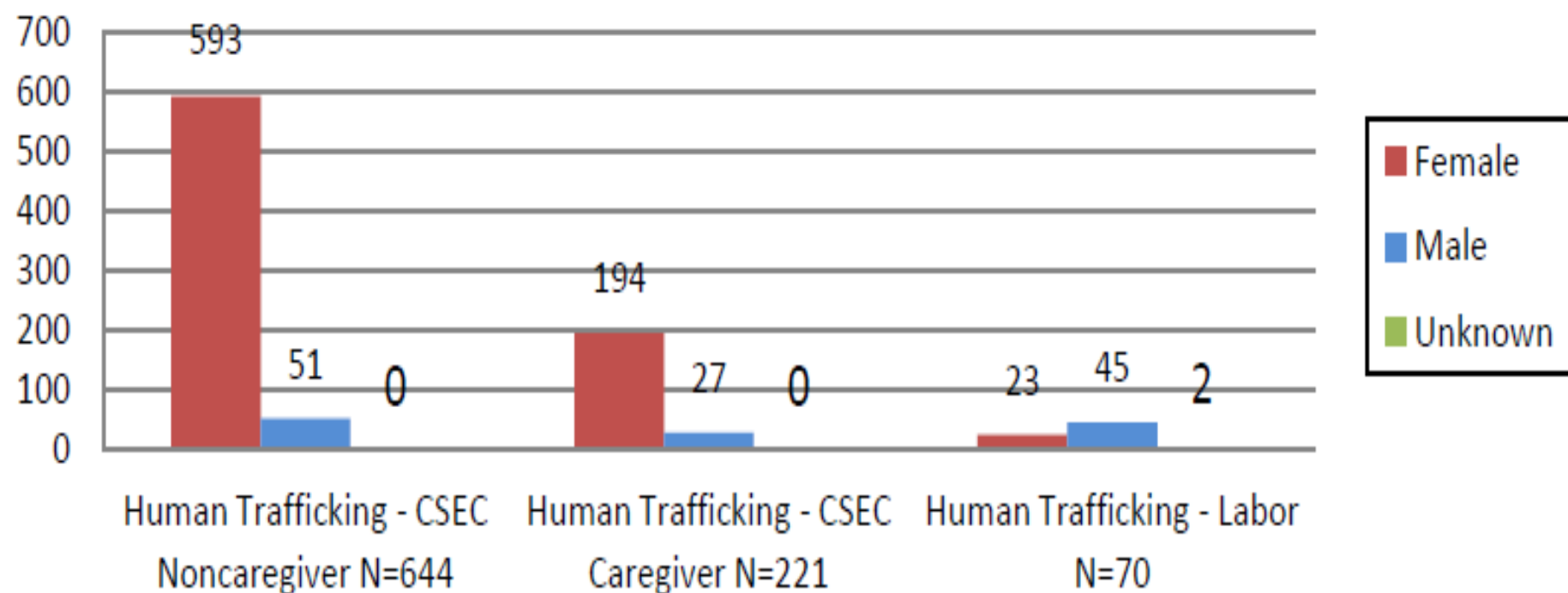
Data Source: Florida Department of Children and Families, Office of Child Welfare, Florida Safe Families Network (FSFN) Human Trafficking Calendar Year-to-Date Report 10/18/2013

## 2012-13 FFY Florida Abuse Hotline Human Trafficking Intakes (Initial and Additional) by Allegation Type



Data Source: Florida Department of Children and Families, Office of Child Welfare, Florida Safe Families Network (FSFN) Human Trafficking Calendar Year-to-Date Report 10/18/2013

## 2012-13 FFY Florida Abuse Hotline/Human Trafficking Intakes (Initial and Additional) by Alleged Victim Gender and Allegation Type



Data Source: Florida Department of Children and Families, Office of Child Welfare, Florida Safe Families Network (FSFN) Human Trafficking Calendar Year-to-Date Report 10/18/2013



---

# Two New Trafficking Bills signed

- HB 7141 devotes funding to safe houses and calls for better assessment of child victims and better training for employees dealing with these children.
  - HB989 increases penalties for those who exploit children and derive income from commercial sex, prohibits minors from work in adult theatres and allows victims to expunge certain offense committed by being exploited.
-

---

# Devereux Resources

Devereux Florida is represented on several task forces and work groups throughout the state, such as:

- Greater Orlando Human Trafficking Task Force (GOHTTF) – Co-chairing Housing and Victim Services subcommittees
  - East Coast Human Trafficking Task Force (ECHTTF)
  - DCF Human Trafficking Task Force (involvement in clinical workgroup)
  - Statewide DJJ Strategic Planning Workgroup
  - DCF Secretary Jacobo and DJJ Secretary Walters Statewide Human Trafficking Workgroup
  - Key member in the Family Foster Care Treatment Association (FFTA) DMST workgroups
-

---

# Community Based Care and Devereux Collaboration

- Implementation Project: Proposed Phases
  - Phase 1: Training
  - Phase 2: Monthly Case Consultation/Support
  - Phase 3: Access to Proper Services
  - Phase 4: Screening Tool Pilot
-

---

# HT 101: Topics

- Dispelling Myths and Prejudices
  - What is HT/CSEC? (Definitions and Statistics)
  - Pathways and Precursors (Socialization, Recruitment, Impact, Who's at Risk?)
  - Exploiters and Customers (Tactics, Types, socialization)
  - Trauma Bonding
  - Early Identification (physical and behavioral)
  - Identifying proper service provision
-

---

# HT 201: Topics

- Working Directly with survivors
    - Youth Development
    - Stages of Change
    - Motivational Interviewing
    - Trauma informed care
    - Victim Centered approach
    - Safety Planning
    - Triggers
  - Vicarious Trauma
    - Triggers
    - Self Care
-

---

# Devereux Florida

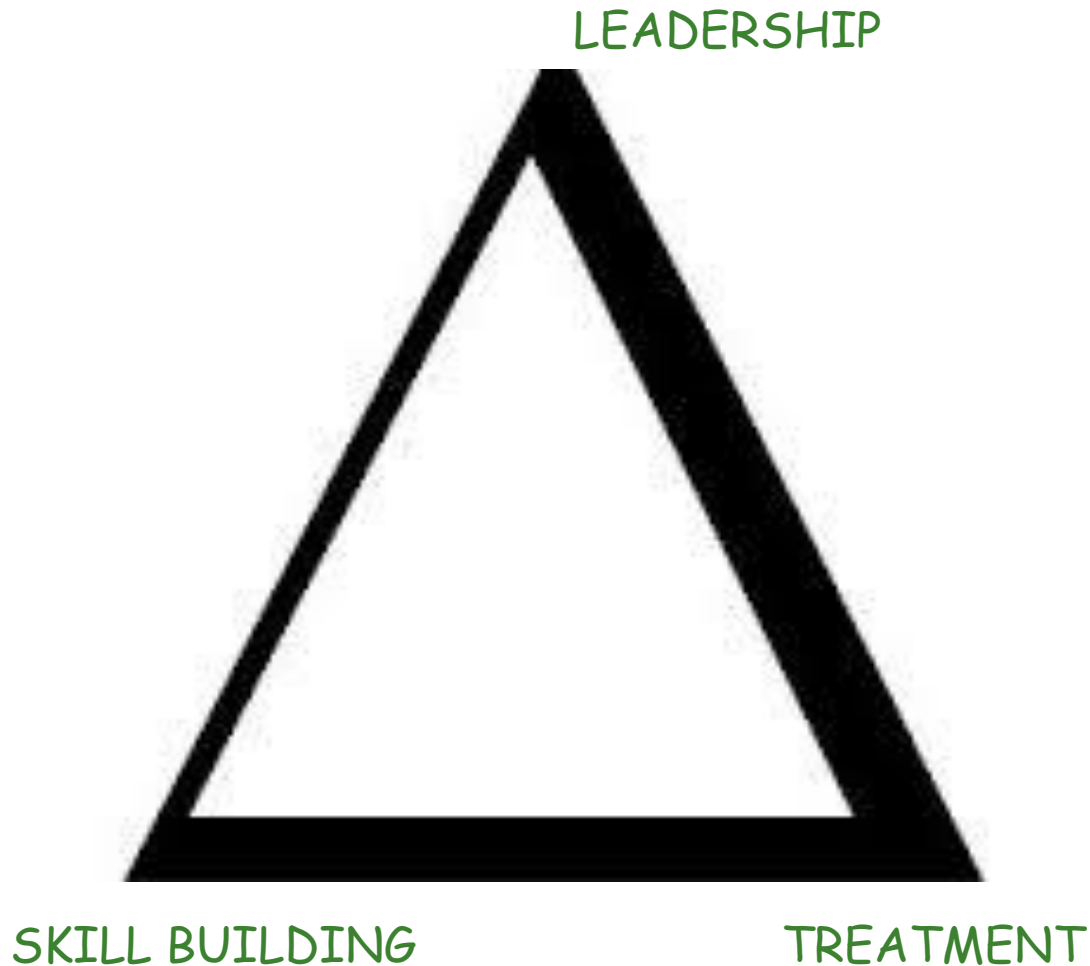
- ❖ Devereux Florida, a part of Devereux Foundation, was established over 25 years ago and is accredited by the Joint Commission on Accreditation of Healthcare Organizations.
- ❖ Devereux Florida's headquarters is located in Orlando.
- ❖ Serving children and families throughout the entire state with locations in 30 counties.
- ❖ Our staff of more than 1,000 touches the lives of over 5,000 children on any given day and serves over 13,000 families on an annual basis.

---

# Devereux Florida

- ❖ Devereux Florida offers a full continuum of care through several different programs and services including:
  - Intensive Residential Treatment Center/ Children's Specialty Hospital
  - Statewide Inpatient Psychiatric Program (SIPP)
  - Autism & Intellectual/Developmental Disabilities Program
  - Residential Group Care
  - Specialized Therapeutic Group Homes
  - Intensive Behavior Group Homes
  - Child Welfare Services
  - Foster Care & Adoption Programs
  - Family Counseling Center
  - Abuse and Neglect Prevention Services

# What does DELTA mean to Devereux?



Dedicated

Empowered

Leader

Triumphant

Advocate



---

# DELTA Treatment Tracks

- Devereux has implemented a specialized treatment model on our Viera Campus in either our locked or unlocked program to meet the unique needs of this population.
  - Specialized therapeutic services to address the unique needs of survivors of sexual exploitation are now available to youth who are placed in Devereux Florida's **Specialized Therapeutic Group Homes**
  - Devereux Florida's **DELTA Foster Care Program** is available for children in traditional, therapeutic and specialized therapeutic levels of foster care, focused on the individual needs of youth.
  - The Devereux Family Counseling Center provides outpatient therapeutic services to survivors of commercial sexual exploitation, as well as therapeutic counseling and support for family members, through the **DELTA Counseling Program**. The program offers intensive wraparound services in the greater Orlando area.
-

---

# Eligibility for DELTA Treatment Tracks

- Current and/or historical reports of involvement in commercial sexual acts
  - Reports of significant exposure to trauma
  - Full Scale IQ of 60 or above - Social Adaptive composite score will be taken into consideration
  - Ability to benefit from cognitive behaviorally focused treatment
  - Must meet minimum criteria for the level of care.
-

---

# Treatment Modalities

- Therapy modalities include but are not limited to:
    - Trauma Focused Cognitive Behavioral Therapy (TF-CBT)
    - Motivational Interviewing
    - Applied Behavioral Analysis
    - Dialectical behavior therapy (DBT)
    - Cognitive Behavioral Therapy
    - Specialized CSEC Group Curriculum
-

---

# Referring to Devereux

- ❖ At Devereux, we welcome the opportunity to work with youth referred to us throughout Florida.
- ❖ Devereux marries outstanding clinical treatment with a caring, compassionate and individualized approach to everything we do.
- ❖ Searching for the right program for your client can be overwhelming and stressful. We are here to guide you every step of the way.
- ❖ We look forward to partnering with you to help find the best program available based on your client's specific medical needs.
- ❖ For additional information or to refer a client, please call **1.800.DEVEREUX (1.800.338.3738)** or visit **devereuxfl.org**.

---

# Further Training

- If you are interested in further training, please send an email to [ewirsing@devereux.org](mailto:ewirsing@devereux.org) or [lpompa@devereux.org](mailto:lpompa@devereux.org)
-