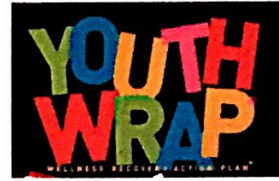


Tri-County Children's Cabinet Scorecard

Membership Participation (positive responses/total survey responses)			
Initiative	Osceola County	Orange County	Seminole County
Child Abuse Prevention	20/0	22/2	13/3
Mental Health Awareness		9/1	
Water Safety	2/0		9/0
Car Seat Safety and hypothermia			

*Those participating; shared FB posts, distributed handouts, spoke to staff-clients-neighbors and the general public, attended programs, etc.



WRAP is a structured system to monitor uncomfortable and distressing symptoms that can help you reduce, modify or eliminate those symptoms by using planned responses. This includes plans for how you want others to respond when symptoms have made it impossible for you to continue to make decisions, take care of yourself or keep yourself safe. The person who experiences symptoms is the one who develops their personal WRAP. The person may choose to have supporters and health care professionals help them create their WRAP.

WRAP is designed to:

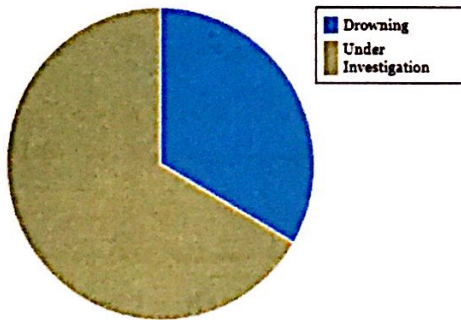
- Decrease and prevent overwhelming or troubling feelings / behaviors
- Increase personal empowerment
- Enhance life wellness
- Assist you in achieving your own life goals and dreams

Tri-County Child Fatalities 2016

Total Orange County Child Fatalities 2016: 9

[Return to Selection Screen](#)

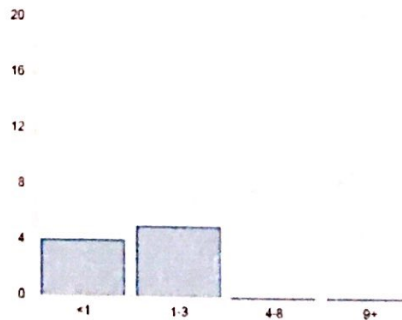
Fatalities By Causal Factor



View By Age

View Trend

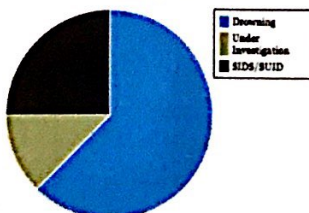
Children 3 and Under represent 100% of Fatalities



Total Osceola County Child Fatalities 2016: 8

[Return to Selection Screen](#)

Fatalities By Causal Factor



View By Age

View Trend

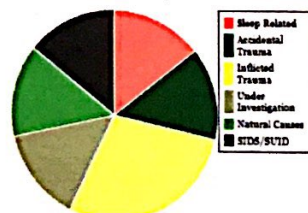
Children 3 and Under represent 88% of fatalities



Total Seminole County Child Fatalities 2016: 7

[Return to Selection Screen](#)

Fatalities By Causal Factor



View By Age

View Trend

Children 3 and Under represent 71% of fatalities



Top service requests Jul 29, 2015 to Jul 27, 2016

TOP REQUEST CATEGORIES

Display as: PERCENT COUNT

Housing & Shelter	45.2%
Food	7.8%
Utilities	17.8%
Healthcare	6.0%
Mental Health & Addictions	4.8%
Employment & Income	5.2%
Clothing & Household	2.0%
Child Care & Parenting	<1%
Legal Services	2.7%
Transportation Assistance	1.1%
Education	<1%
Disaster	<1%
Other	5.4%
Total for top requests	100%

TOP HOUSING & SHELTER REQUESTS

Shelters	25.3%
Low-cost housing	22.4%
Home repair/ maintenance	1.5%
Rent assistance	50.5%
Mortgage assistance	<1%
Landlord/ tenant issues	<1%

0 = No requests made
Not Available = Data not collected
Some requests are only computed at the category level

The chart to the right shows 2-1-1 data, over 70% of the tri-county requests received are for shelter, food or utilities.

The breakdown for housing/shelter tri-county requests are in the box below. (Green)

As you see to the right, the Mental Health and Addictions requests are 4.8% of all requests for the tri-county area. For each County:

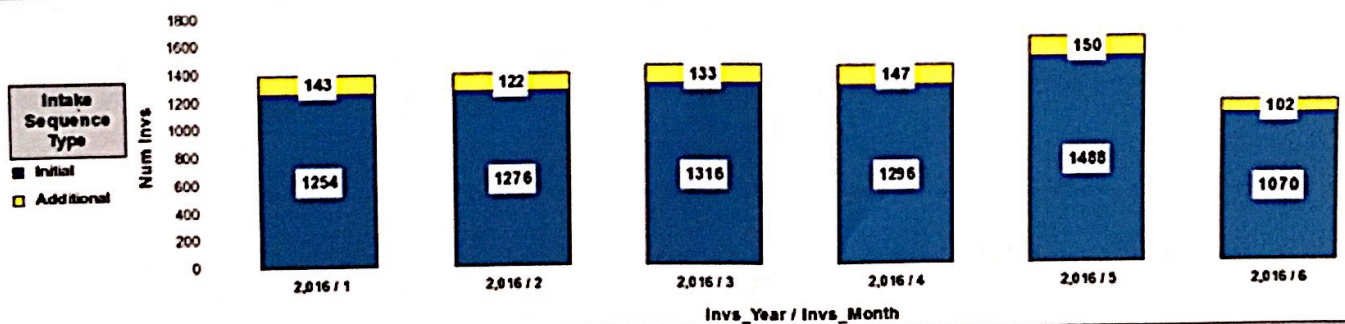
- Orange 4.5%
- Osceola 5.6%
- Seminole 5.9%

TOP MENTAL HEALTH & ADDICTIONS REQUESTS

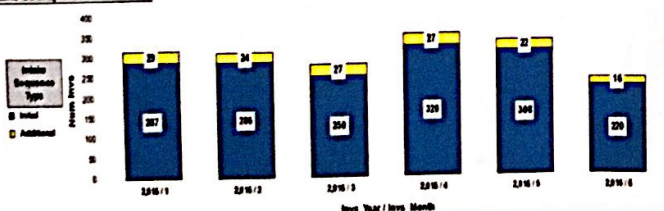
Substance abuse & addictions	33.4%
Marriage & family	<1%
Crisis intervention & suicide	15.1%
Mental health services	41.4%
Mental health facilities	9.5%

0 = No requests made
Not Available = Data not collected
Some requests are only computed at the category level

Intake County of Orange



Intake County of Osceola



Intake County of Seminole

